

Nozzles for Electrostatic Encapsulator

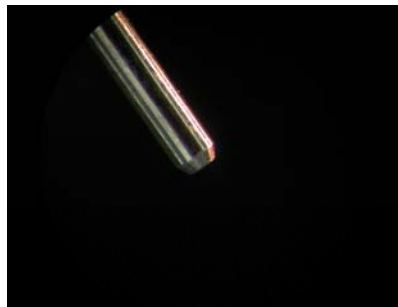
Standard nozzles

OD	ID
0.20	0.09
0.35	0.17
0.50	0.25
0.70	0.40
0.80	0.50
0.90	0.60
1.10	0.70



Specialising nozzles with polished ends

OD	ID
0.20	0.09
0.35	0.17
0.50	0.25
0.50	0.30
0.80	0.50
0.70	0.40
0.90	0.60
1.10	0.70



Advantage:

- better bead quality
- less "small side beads"
- smaller drops with given diameter

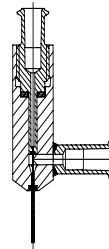
Material quality (standard and specialised nozzles):

body: brass chromium plated tube: stainless steel 1.4301
 Option:
 Body: stainless steel 1.4435 tube: stainless steel 1.4301

Coaxial nozzles

Coaxial tube for two types of liquid

Innen da/di	Aussen DA/DI	$s = (D_i - d_a) / 2$
0.2 / 0.09	0.6 / 0.4	0.1
0.25 / 0.11	0.7 / 0.45	0.1
0.3 / 0.15	0.8 / 0.50	0.1
0.4 / 0.2	0.9 / 0.6	0.1
0.5 / 0.25	1.0 / 0.75	0.125
0.6 / 0.35	1.1 / 0.8	0.1



Material quality: body stainless steel 1.4435, tubes 1.4301