

# Sterilisable Pressure Sensor for Encapsulation Unit J30

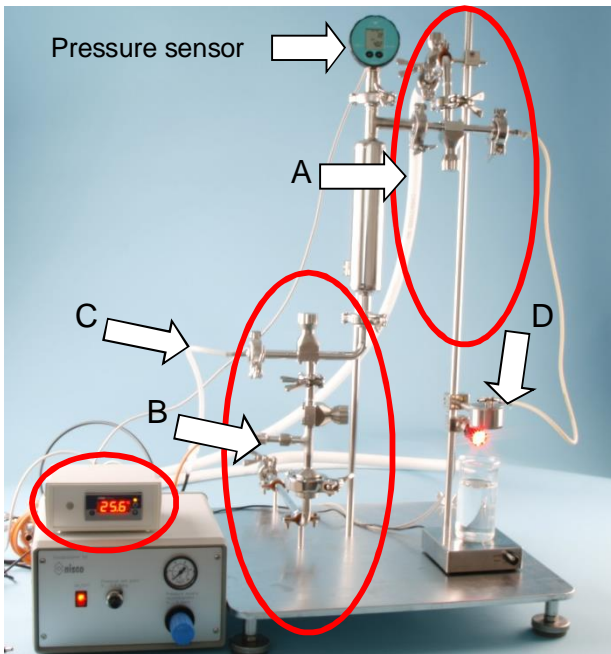


## Nisco Engineering AG

Wehntalerstrasse 562  
 CH-8046 Zurich, Switzerland  
 Tel: +41 44 380 06 30  
 Fax: +41 44 380 06 31  
 e-mail: mailbox@nisco.ch  
<http://www.nisco.ch>

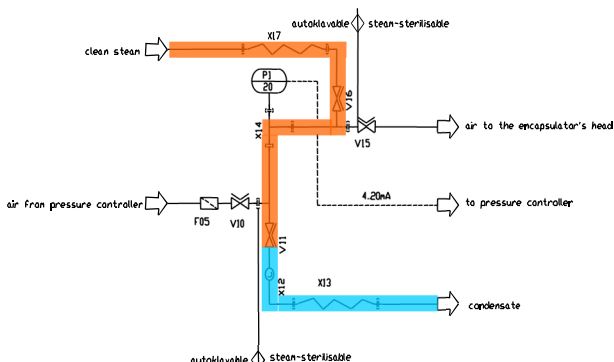
The option sterilisable pressure sensor is used in combination with the aerodynamic encapsulation unit VAR J30 in order to avoid biological contamination with the air supply system.

In the picture below you can see that the sterilisable pressure sensor contains three main parts (circled), which are naturally integrated into the encapsulation unit J30. The temperature for sterilisation is displayed on the temperature indication unit (as an option available). The rigid platform at the bottom secures stability of the whole system.



The clean steam comes through the hose A (steam inlet) into the system, sterilise its each part and the condensate is released through the hose B (condensate outlet).

### Steam flow (sterilisation)

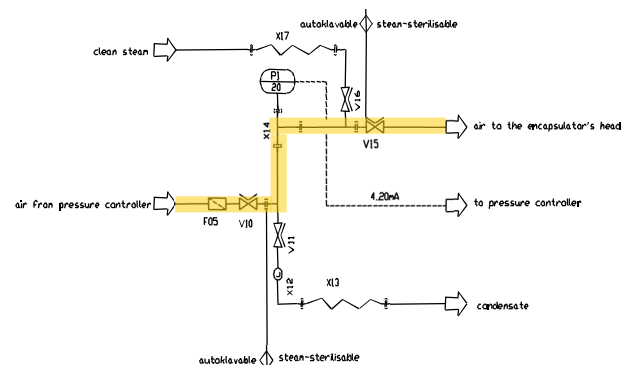


Clean steam (red); Condensate (blue)

Please make sure that the steam temperature never exceeds 135°C. The EPDM gaskets and the membranes on your membrane valves melt at this temperature level. To operate the system you need the clean steam between 2.1 barg to 3.1 barg.

Air from J30 control cabinet enters the system through the hose C and the sterile filter and flows to the J30 head (D).

### Air flow (normal operation)



The pressure drop through the sterile filter is compensated with the pressure measurement upstream the filter.

### Materials

Stainless steel AISI 316L or equivalent for the parts in the contact with the product.  
 AISI 304 or equivalent for the parts which are not in the contact with the product.  
 Gaskets EPDM

Material certificates for all parts in contact with the product can be supplied on request, this will allow you to operate the unit under cGMP conditions.